



FILMING BROCHURE 2024

CONTENTS

OVERVIEW

ABOUT	page 3
GUIDELINES	page 4
TECH SPECS	page 5

MARKET SPACES

LOCATIONS	page 7
LOCK	page 8
STABLES	page 9
HAWLEY WHARF	page 12

RATES

RATES	page 14
SMALL SCALE	page 15



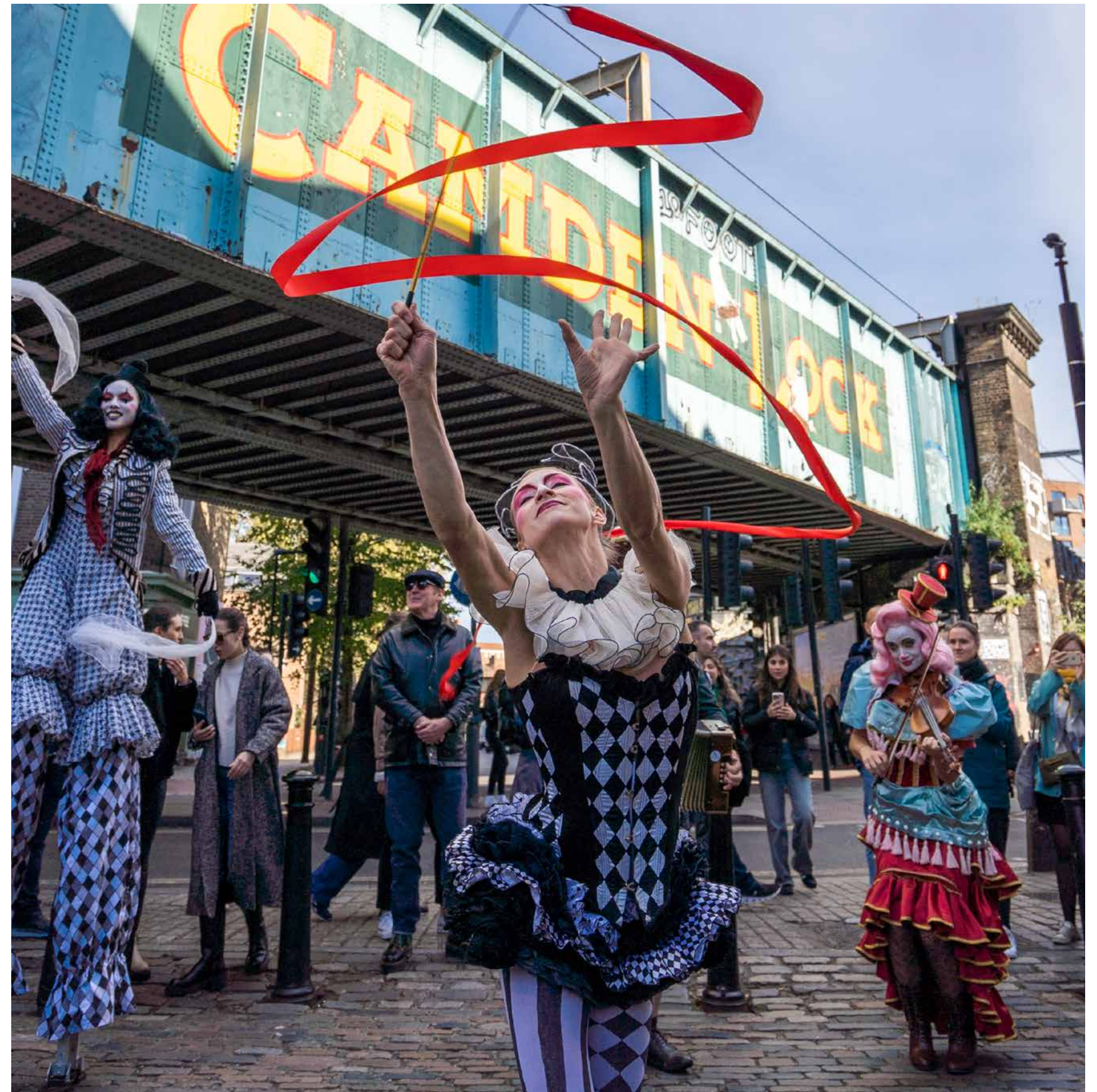
Filmfixer is the
Camden Market
Film Office

ABOUT

Camden Market is a melting pot of music, fashion, food and experiences across four unique quarters; Lock, Stables, Hawley Wharf and Buck Street. It is home to a diverse community of creative sellers, street food traders, independent shops and unique restaurants next to the Regent's Canal, open seven days a week.

Starting off as a small arts and crafts fair in the goods yard of Dingwalls, Camden Market now spans Lock & Stables; recognisable by its cobbled alleys, arches and listed buildings, and Hawley Wharf; a new canal-side shopping and dining development with food courts and modern architecture. All alongside recognisable landmarks such as the Camden Lock railway bridge, the Amy Winehouse statue, and Cyberdog store.

To make an enquiry, please email camdenmarket@filmfixer.co.uk



FILMING GUIDELINES

Camden Market has appointed FilmFixer to handle filming and photography and applications on its behalf.

Commercial filming and photography (including footage and images for online promotional purposes) is permitted with prior permission.

This guide outlines the types of shoot which can be accommodated as well as technical details, fees, site & floor plans, T&Cs, H&S information and how to apply.

Fees are calculated based on the location, the number of people, length of time and impact on site, as well as the time spent organising the shoot internally.

In 2022-23, Camden Market played host to shoots for Apple TV's Trying, BBC's Doctor Who and an upcoming remake of Day of the Jackal.

In addition to obtaining permission from FilmFixer productions of scale or content liable to cause disturbance will need to notify businesses and any residents who overlook the filming as early as possible.

A resident/business letter should be approved before distribution.

FilmFixer will liaise with Camden Market on the production's behalf. The production company is responsible for liaising with any affected businesses or traders with regards to loss of trade.

Crew size should include cast, models, artists, presenters, contributors, chaperones and agency.

Admin fees are calculated per hour of administrative time incurred by FilmFixer. The figures quoted are a minimum charge and may be multiplied accordingly for intensive applications.

For all applications, cleared payment must be made before the first date of the booking.

Payment can be made by card online, or by BACS with proof of payment or remittance.

Public Liability Insurance with a minimum cover of £5million is required for all applications.

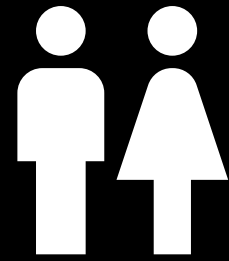
Value may increase to £10million for shoots using a UAS drone or undertaking significant set dressing / builds or special effects.

Risk assessments, drawings or plans may be required for application-specific works (ie. drone flights, rigs, scaffolding, cranes etc).

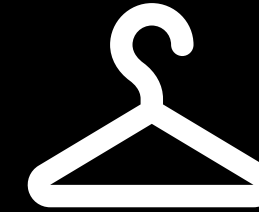
Security deposits are taken for all shoots. If terms and conditions are not adhered to, the security deposit may not be returned.

All bookings are subject to FilmFixer's standard Cancellation & Rescheduling Policy. Larger scale and longer length bookings may be required to pay a non-refundable Holding Deposit. Policy available upon request.

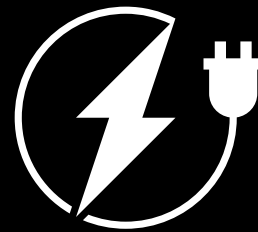
SCENE SHEET

**TOILETS**

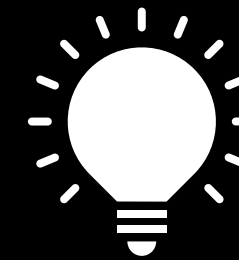
Toilets available on site.

**GREEN ROOM**

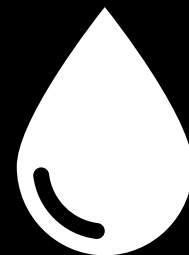
Various units are available on site.

**ELECTRICITY**

Some 3-phase power outlets are available. Generators are allowed on site.

**LIGHTING**

Lighting can be switched off on request. Productions must supply replacement lighting.

**WATER**

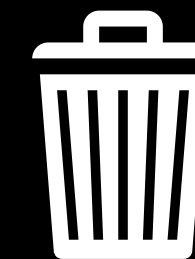
Local water supply is available for wet downs.

**PARKING**

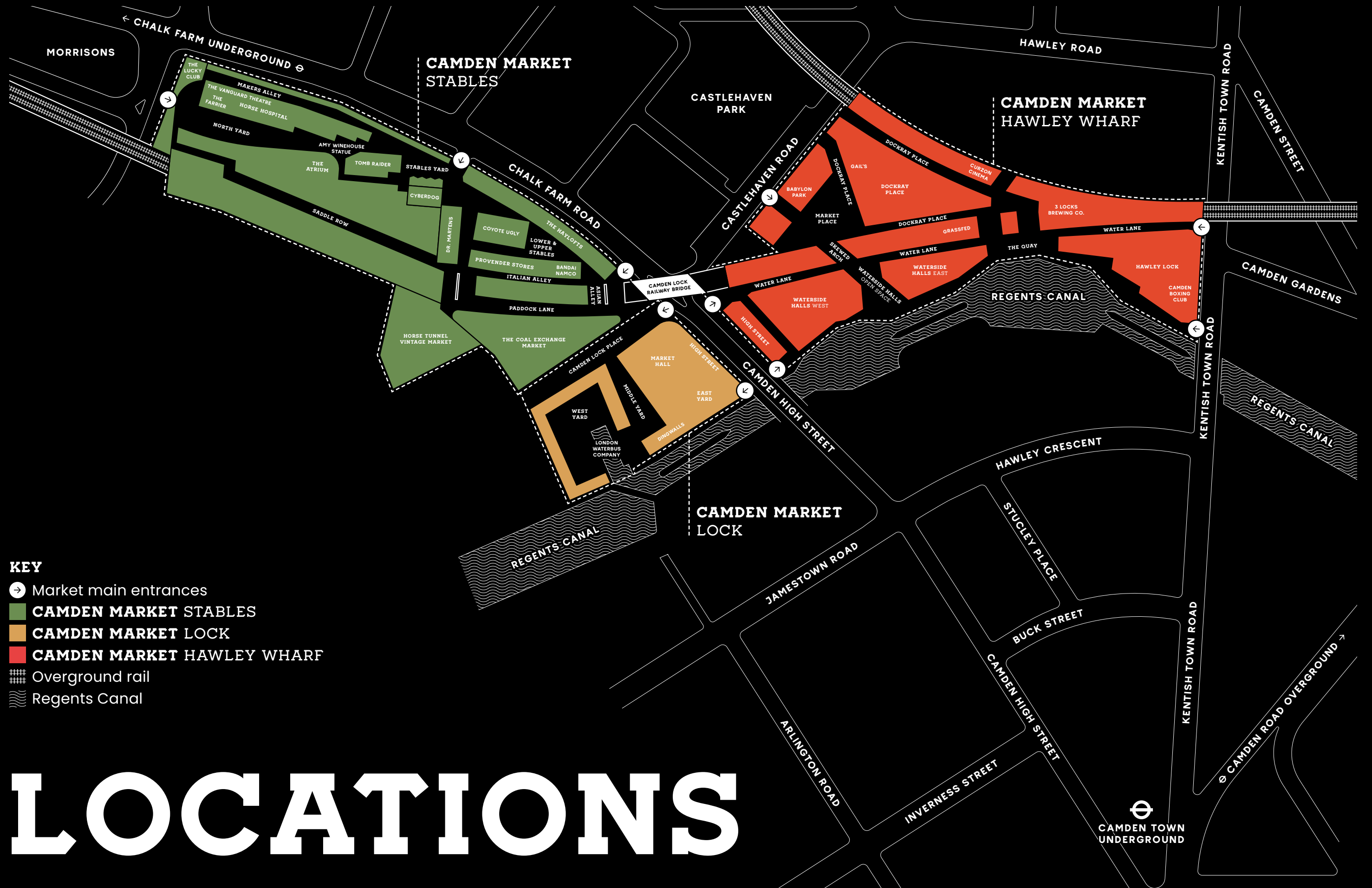
Some parking available on site. On-street council bay suspensions may be facilitated.

**VEHICLE ACCESS**

It is possible to bring vehicles to some areas of the Market. Vehicle movement is restricted to before 8am and after 6pm Monday to Thursday. Before 8am and after 9am Friday to Sunday.

**WASTE DISPOSAL**

All waste must be removed by the production on a daily basis. Waste cannot be left outside under any circumstances.

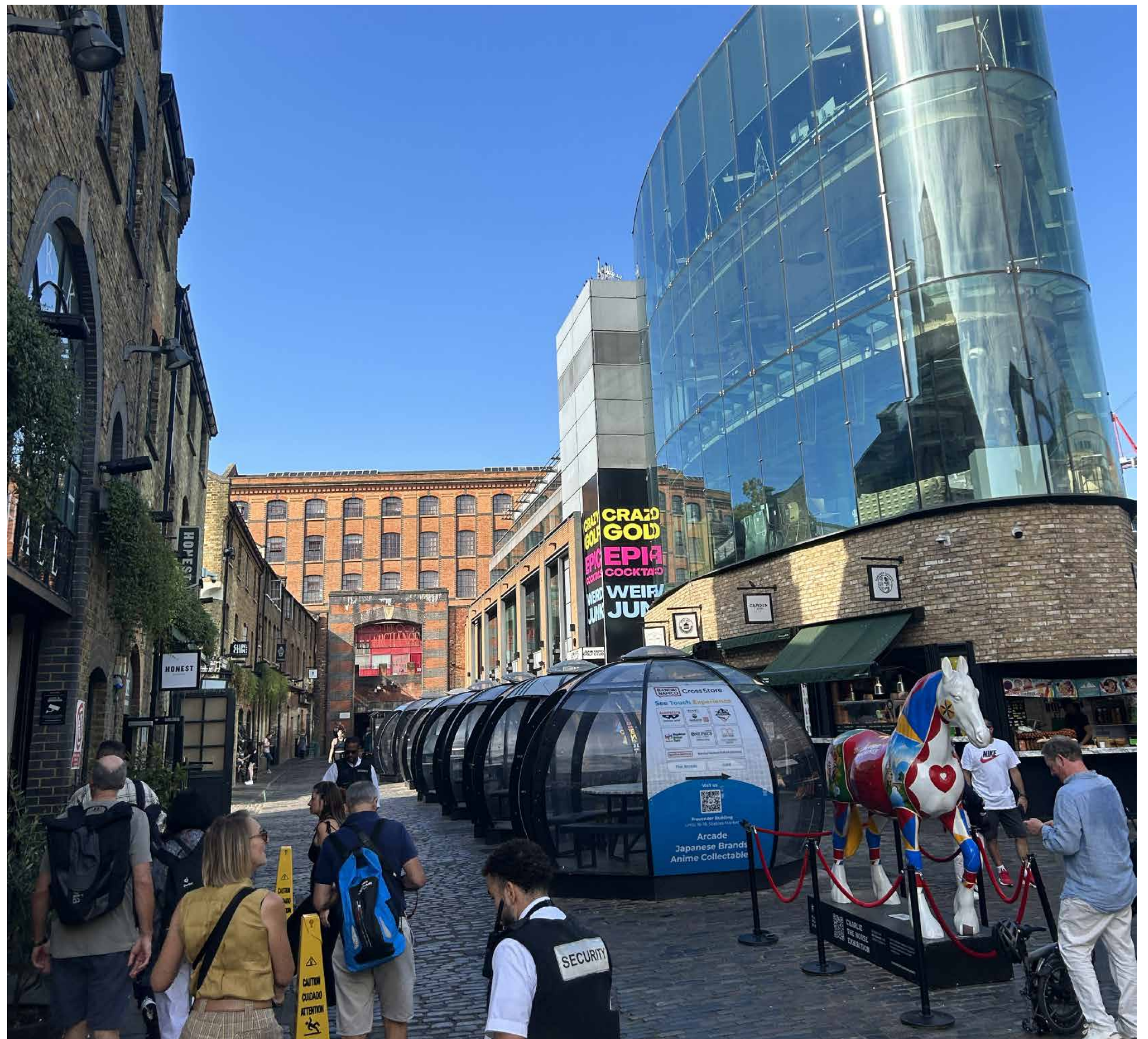


LOCK



LOCK

Camden Lock Place is one of the most easily recognisable areas of the market, acting as an entrance to the wider site from Camden High Street, right underneath the Camden Lock Railway Bridge. A series of cobbled yards, interconnected by alleys, lanes and stairways, joins the market traders by the canal with the bustling food stalls that connect with the Stables market. Camden Market Lock is also home to Market Hall, an original market hall with tiled floors and a mezzanine floor.



STABLES



STABLES





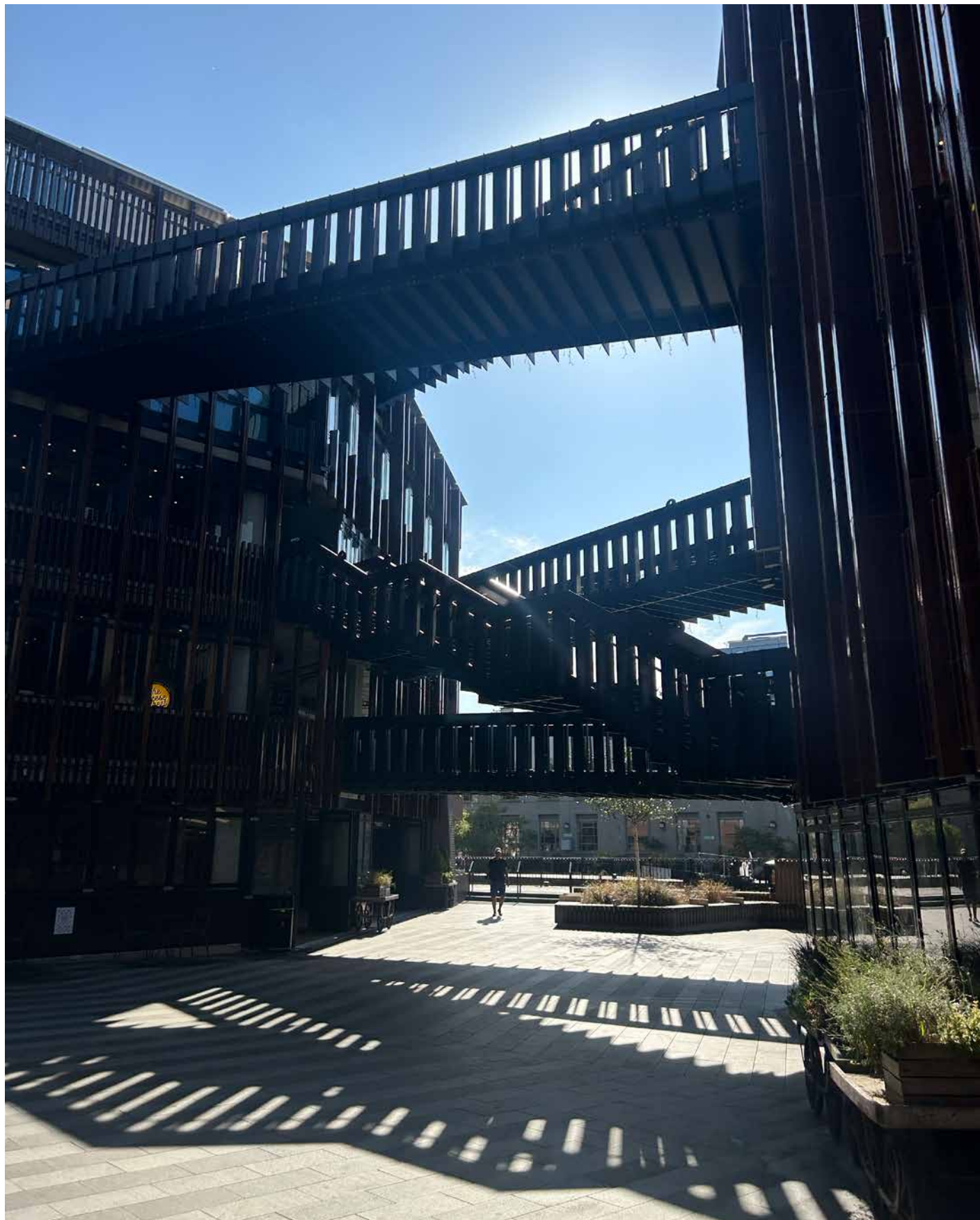
STABLES

Camden Market Stables was once a network of saddlers workshops, tack rooms and a horse hospital and stables. Much of this infrastructure remains, and it's now home to a series of listed cobbled yards and alleys, the Instagram-famous umbrella alley, the Amy Winehouse statue and basement Horse Tunnel Vintage Market, complete with old stable doors.



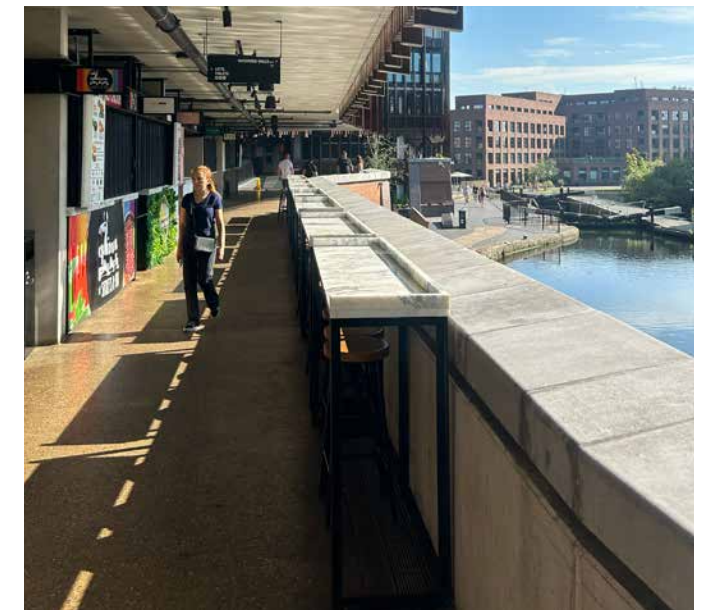
HAWLEY WHARF





HAWLEY WHARF

Camden Market Hawley Wharf is a canal-side development built along the Regents Canal alongside Hawley Lock. It encompasses two modern buildings, Waterside Halls, interconnected by three walkways, inside which you'll find market units and food stalls. Exploring the wider site, you'll find a large open-air quay, a micro-brewery, three cafes, a hair salon, multiple archway retail units, an underground children's theme park and a Curzon cinema.



RATES

LabTech and FilmFixer are delighted to consider all types of applications on a case by case basis. Please make sure you enquire early so we can accomodate your request. Small (up to 5 crew) and Medium (5-15 crew) productions will need to give a minimum of 10 days notice whilst large and very large productions need at least three weeks notice.

Exact rates are calculated based on the type and requirements of the production:

- Total amount of people on site (including extras, presenters, contributors, artists, agency, security etc)
- Amount of time on site – Prep/trike days are charged at 50% of the shoot day fee
- Scale of equipment (ie. drones, cranes, generators)
- Level of control required

Additional costs:

- Staff supervision – TBC
- Waste disposal – TBC
- Water for bowzers – TBC

- All rates quoted are subject to VAT.
- Non-refundable holding and damage deposits are taken for larger scale or longer length bookings.
- FilmFixer's Cancellation & Rescheduling Policy applies to all bookings.
- Public liability insurance of a minimum of £10 million is required for all bookings.
- Cleared payment is required before the start of all bookings (proof of payment required).

SMALLER SCALE

**STUDENTS &
MICRO-BUDGET INDIES**

Non-commercial projects by students (proof required), micro-budget independent projects (unfunded films, personal portfolios etc) may be permitted to shoot in the Market at reduced rates but require a permit.

CHARITIES

Campaigns undertaken by charities directly are permitted to shoot at reduced rates. Campaigns undertaken by an agency on behalf of charities are not eligible for reduced rates.

SOCIAL MEDIA/PROMOS

Influencers who are shooting photos or videos for promotional purposes (ie. Instagram ads or YouTube videos for commercial gain) require a permit.

PERSONAL

Photos and videos can be taken by day visitors in the market without permission if for personal, non-commercial use only. Drones, tripods, lights etc are not permitted.

OTHER

Small shoots of up to 10 cast/crew will be considered on a case by case basis



FILMING BROCHURE 2024